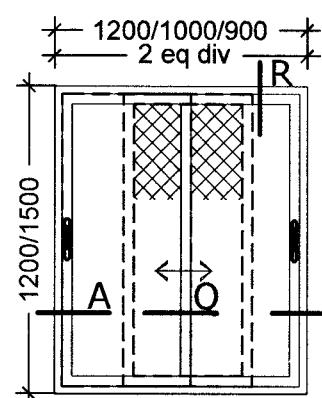


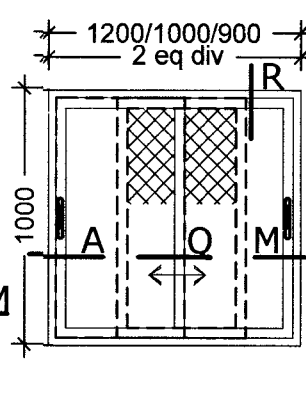
ELEVATION

ALW24F - 2400 X 1200
ALW20F - 2000 X 1200
ALW18F - 1800 X 1200
ALW15F - 1500 X 1200
ALW24AF - 2400 X 1500
ALW20AF - 2000 X 1500
ALW18AF - 1800 X 1500
ALW15AF - 1500 X 1500



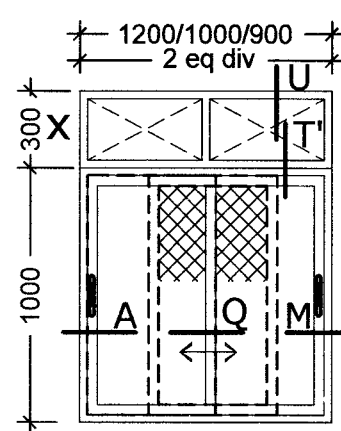
ELEVATION

ALW12F - 1200 X 1200
ALW10F - 1000 X 1200
ALW9F - 900 X 1200
ALW12AF - 1200 X 1500
ALW10AF - 1000 X 1500
ALW9AF - 900 X 1500



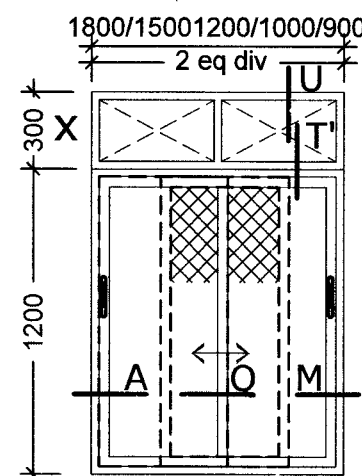
ELEVATION

ALWK12F - 1200 X 1000
ALWK10F - 1000 X 1000
ALWK9F - 900 X 1000



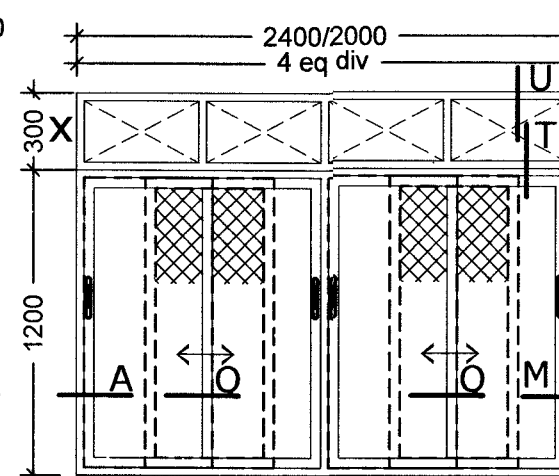
ELEVATION

ALWK 12FX - 1200 X 1300
ALWK 10FX - 1000 X 1300
ALWK 9FX - 900 X 1300



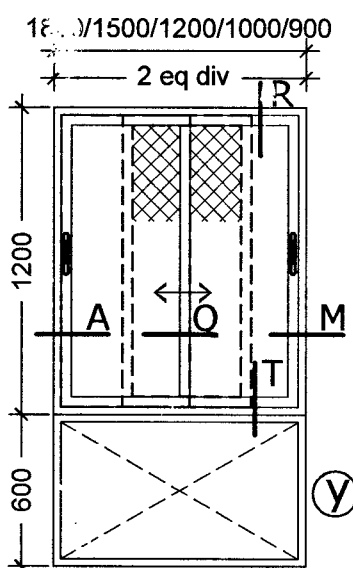
ELEVATION

ALW 18FX - 1800 X 1500
ALW 15FX - 1500 X 1500
ALW 12FX - 1200 X 1500
ALW 10FX - 1000 X 1500
ALW 9FX - 900 X 1500



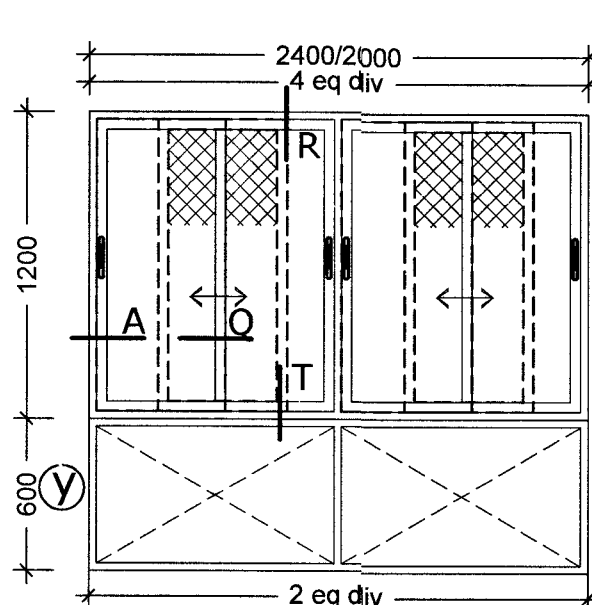
ELEVATION

ALW 24FX - 2400 X 1500
ALW 20FX - 2000 X 1500



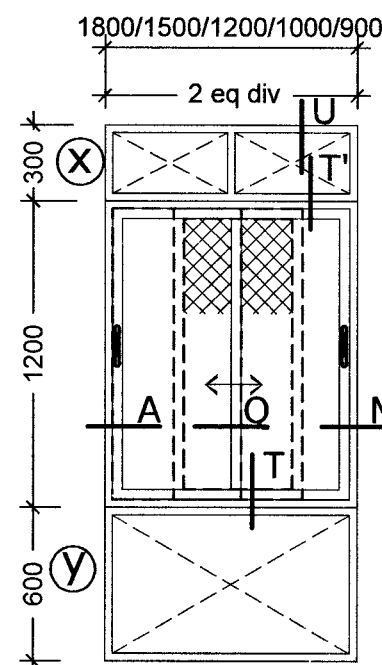
ELEVATION

ALW 18FY - 1800 X 1800
ALW 15FY - 1500 X 1800
ALW 12FY - 1200 X 1800
ALW 10FY - 1000 X 1800
ALW 9FY - 900 X 1800



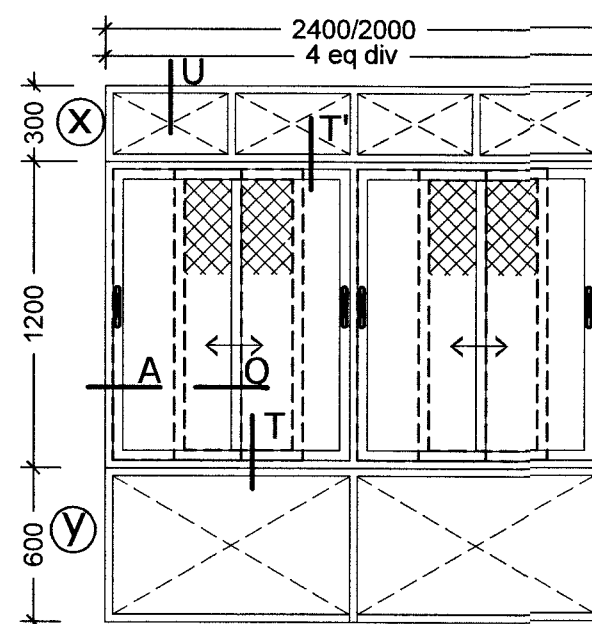
ELEVATION

ALW 24FY - 2400 X 1800
ALW 20FY - 2000 X 1800



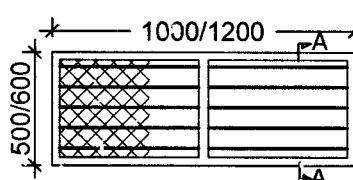
ELEVATION

ALW 18FX - 1800 X 2100
ALW 15FX - 1500 X 2100
ALW 12FX - 1200 X 2100
ALW 10FX - 1000 X 2100
ALW 9FX - 900 X 2100



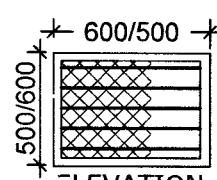
ELEVATION

ALW 24XY - 2400 X 2100
ALW 20XY - 2000 X 2100



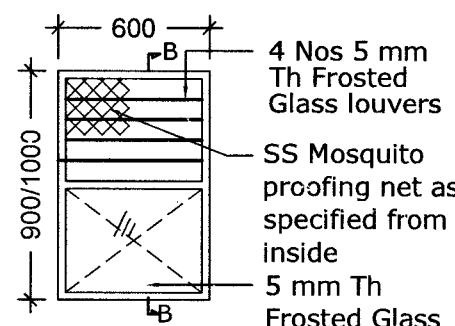
ELEVATION

ALV10F - 1000 X 500
ALV12F - 1200 X 500
ALV10AF - 1200 X 600
ALV12AF - 1200 X 600



ELEVATION

ALV5F - 500 X 500
ALV6F - 600 X 500
ALV5AF - 500 X 600
ALV6AF - 600 X 600



ELEVATION

ALW6F - 600 X 900
ALW6AF - 600 X 1000

NOTES

12. Tolerance of 5 mm on overall size of window frame on either side (horizontal & vertical) shall be permitted after allowing 15 mm plaster on masonry/Conc surfaces.
13. After fixing the windows in position gap between wall and window shall be sealed with silicon sealant and breckon rod of make 'SUPREME' or its equivalent of 6 to 8 mm dia as per manufacturer instruction.
14. Cill as per detail shall be provided for all windows, ever if it is not shown in the Arch Main drgs.
15. Drawings are prep using Jindal extrusions, however the Aluminium Extrusions can be used either of Jindal or Hindalco or any equivalent make as listed in Tender.
16. All the Aluminium extrusions/sections shall be powder coated with 50 to 60 µm of approved colour.
17. Make & specification of high performing glass which reduces direct/indirect heat may be included in tender, for sliding windows(SGHS-solar heat gaining coefficient SHGC<0.45(VLT -visual light transmoission) VLT>35, SHGC<0.45 door balcony SHGC<0.45, VLT>38.
18. Stainless steel wire mesh shall be conforming to IS having "not less then 0.40 mm dia" of wire and 1.4 mm maximum width of aperture all as specified in SSR part -.
19. Holes shall be provided on the vertical face of bottom guiding channel to drain out rain
20. No joinery shall be permitted to fixed with angles and screws.
21. Fabrication should be done with approved fabricators. No fabrication on site shall be allowed.
22. Weight and size of all aluminium extrusions / sliding windows / ventilators shown in TD drg. are minimum in case of non availability of these sections in the market ,the contractor shall check and provide the sections with weight more than the minimum specified weight of approved manufacturers.
23. 01 No. zinc body powder coated single point concealed stricker lock cum handle 200 mm long to be provided to each sliding shutter meeting side frame of the window.

S No	DATE	DESCRIPTION	INITIAL
REVISIONS			

**ALUMINUM SLIDING WINDOWS (DELUXE)
(WITH MOSQUITO PROOFING)**

ELEVATIONS OF GLAZED WINDOWS

Date	20 - 06 - 2022	CHIEF ENGINEER (NAVY) VISAKHAPATNAM ZONE	Sheet No 2 / 4
Drawn	NK Vikram		
Ckd	K S Vani		
Scale			

REF DRG NO : CEVZ / 2022 / TD - 13(D)

 AAD (Arch)	 Jt Director (Arch)	 Director (Arch) Enr Chief Engineer
----------------	------------------------	---